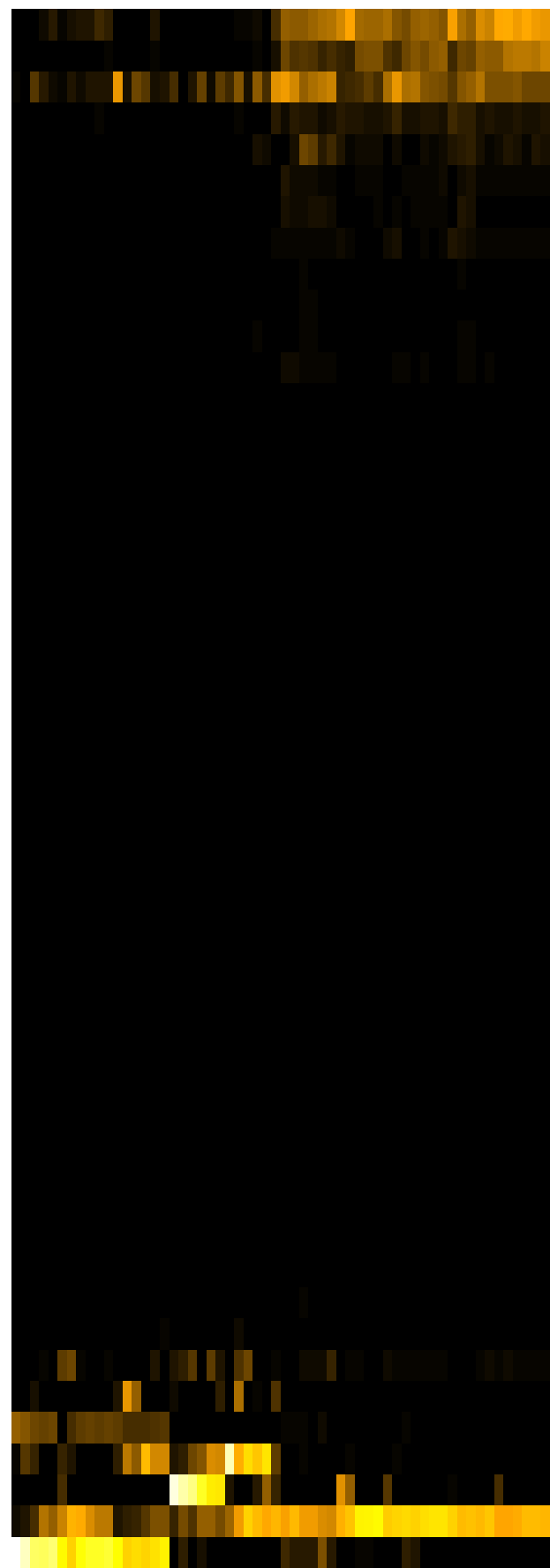
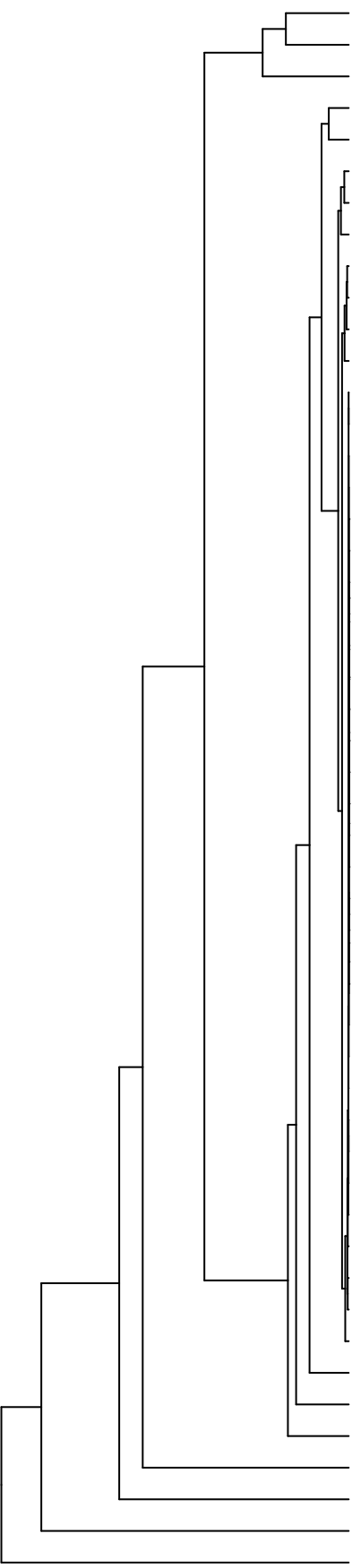


Group006  
 I Final -PMA  
 C Final -PMA



- Veillonella
- Haemophilus
- Neisseria
- Granulicatella
- Fusobacterium
- Eikenella
- Aggregatibacter
- Schaalia
- Porphyromonas
- Leptotrichia
- Campylobacter
- Gemella
- Saccharibacteria\_(TM7)\_[G-1]
- Lancefieldella
- Saccharibacteria\_(TM7)\_[G-6]
- Oribacterium
- Capnocytophaga
- Acinetobacter
- Novosphingobium
- Lachnospiraceae\_[G-2]
- Leifsonia
- Agrobacterium
- Sphingobium
- Riemerella
- Microbacterium
- Siccationidurans
- Saccharibacteria\_(TM7)\_[G-5]
- Phyllobacterium
- Serratia
- Acidovorax
- Abconditabacteria\_(SR1)\_[G-1]
- Pseudomonas
- Cutibacterium
- Catonella
- Lautropia
- Alloprevotella
- Lachnoanaerobaculum
- Solobacterium
- Delftia
- Actinomyces
- Prevotella
- Stomatobaculum
- Staphylococcus
- Rothia
- Raoultella
- Salmonella
- Klebsiella
- Enterobacter
- Streptococcus
- Citrobacter

- F28914.S460
- F28914.S463
- F28914.S410
- F28914.S416
- F28914.S411
- F28914.S409
- F28914.S464
- F28914.S458
- F28914.S457
- F28914.S573
- F28914.S605
- F28914.S570
- F28914.S576
- F28914.S606
- F28914.S297
- F28914.S141
- F28914.S138
- F28914.S137
- F28914.S301
- F28914.S096
- F28914.S303
- F28914.S091
- F28914.S092
- F28914.S090
- F28914.S144
- F28914.S256
- F28914.S249
- F28914.S250
- F28914.S255

Samples

Genus